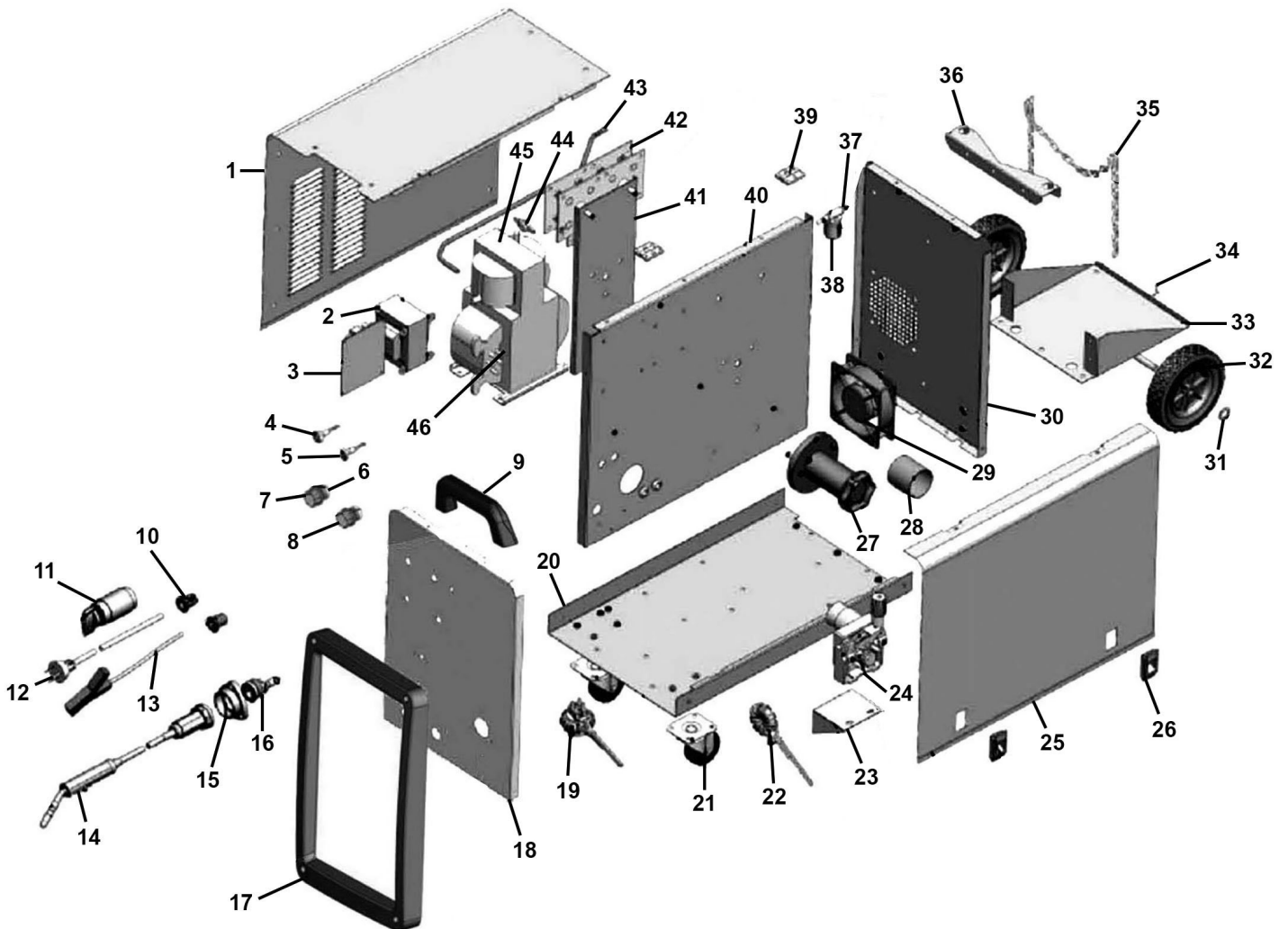


Parts Information:  
**Professional MIG Welder 180A 230V with  
 Binzel® Euro Torch**  
**Model No: SUPERMIG180.V4**



Item	Part No.	Description
1	SMIG180-V4-01	Side Panel, Left
2	SMIG230.02	Control Transformer
3	SMIG180.V3-03	PCB, Control Board- 118 x 110mm
4	SMIG230.04	Indicator (Green)
5	SMIG230.05	Indicator (Yellow)
6	SMIG180.V3-06	Potentiometer
7	PMIG6035S.W25	Knob, Potentiometer, Heptagonal, OD: 33mm, 6mm Female Fitting
8	SMIG180.V3-08	Potentiometer (c/w Switch)
9	SMIG230.09	Handle

Item	Part No.	Description
10	250XTD.28	Cable Holder
11	SMIG180.V3-11	Switch, Rotary c/w Knob (GB14048.3)
12	MC3CX2.5	Mains Cable Blk, 3 Core, 2.5mm <sup>2</sup>
13	SMIG180.V3-13	Earth Cable
14	MIG/T15	Mig Torch 3m Euro Connector MB15
15	SMIG275.24	Torch Holder
16	SMIG230.16	Euro Connector
17	SMIG230.17	Front Frame
18	SMIG180-V4-18	Front Panel
19	SMIG180.V3-19	Emc

**NOTE:** It is our policy to continually improve products and as such we reserve the right to alter data, specifications and component parts without prior notice. There may be alternative versions of this product, please contact us should you require this information.

**IMPORTANT:** No liability is accepted for incorrect use of product. Spare parts must be fitted by a competent person

**WARRANTY:** Guarantee is 12 months from purchase date, proof of which will be required for any claim.



Parts Information:  
**Professional MIG Welder 180A 230V with  
Binzel® Euro Torch  
Model No: SUPERMIG180.V4**

Item	Part No.	Description
20	SMIG230.20	Bottom Panel
21	SMIG230.21	Wheel,Swivel Castor,4 Bolt (D:65 W:25 B:6 H:87)
22	SMIG180.V3-22	Wire Drive Ass'y
23	SMIG180.V3-23	Wire Feed Plate
24	SMIG230.24	Wire Feed Motor (Internal 24V)
25	SMIG180-V4-25	Side Panel, Right
26	SMIG275.14	Door Lock
27	SMIG275.45	Spool Holder
28	SMIG180.V3-28	Spool Spacer
29	180XT.19	Fan
30	SMIG230.30	Back Panel
31	FWM12.S	Flat Washer M12 Zinc
32	SMIG230.32	Wheel,Fixed Plastic (D:150 W:36 B:12)
33	SMIG230.33	Gas Cylinder Bracket
34	800TTJ.41	Cotter Pin 2.4 X 20

Item	Part No.	Description
35	SMIG180.V3-35	Chain
36	SMIG230.36	Gas Cylinder Support
37	SMIG180.V3-37	Gas Connector
38	SMIG180.V3-38	Gas Valve
39	SMIG275.12	Plastic Hinge
40	SMIG230.40	Middle Panel
41	SMIG230.41	Spool Holder Panel
42	SMIG180.V3-42	Rectifier
43	SMIG180.V3-43	Gas Hose 6mm x 8mm x 1040mm
44	SMIG180.V3-44	Thermal Relay
45,46	SMIG180.V3-46	Transformer, Main (inc Reactance)
--	120.990704	Gas Hose And Clip (Not Shown)
--	SFS612.S	Hex Head Flange Bolt M6 x 12 Zinc (Not Shown)
--	MIG/GH	Hose, Gas Per Metre (5mm Id Black Nylon Hose) (Not Shown)

**NOTE:** It is our policy to continually improve products and as such we reserve the right to alter data, specifications and component parts without prior notice. There may be alternative versions of this product, please contact us should you require this information.

**IMPORTANT:** No liability is accepted for incorrect use of product. Spare parts must be fitted by a competent person

**WARRANTY:** Guarantee is 12 months from purchase date, proof of which will be required for any claim.

**Sealey Group**, Kempson Way, Suffolk Business Park, Bury St Edmunds, Suffolk. IP32 7AR



01284 757500



01284 703534



sales@sealey.co.uk



www.sealey.co.uk